

Change Text Attributes with a Macro

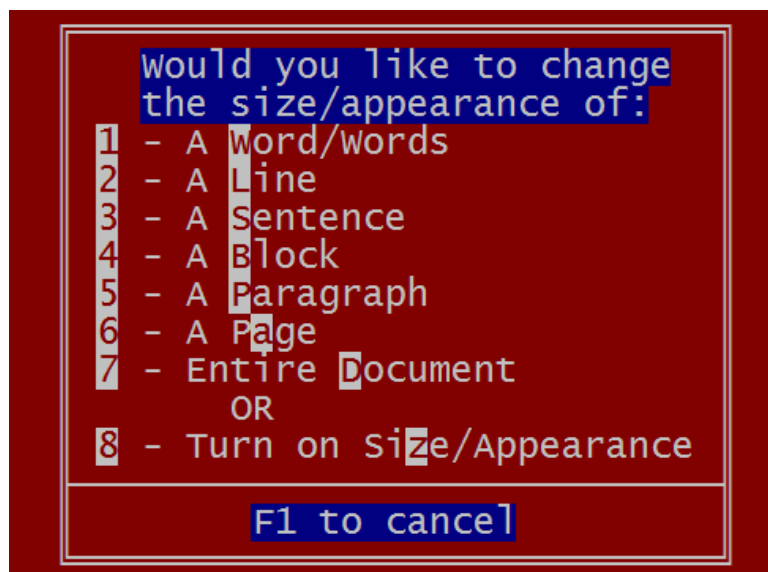
By Daniel Marier

Warning: I have used this macro with some other software running, notably Publisher's Powerpak and Morefonts. I have not experienced any problems with the former but the latter, for some reason will not allow the use of the {SYSTEM}keystate~ so that the third mode of playing the macro (described below) does not work, and it makes the adding of attributes to word/words erratic.

It is strongly recommended that you first rename this macro as an Alt-letter macro.

This macro works in two modes depending on how you play it.

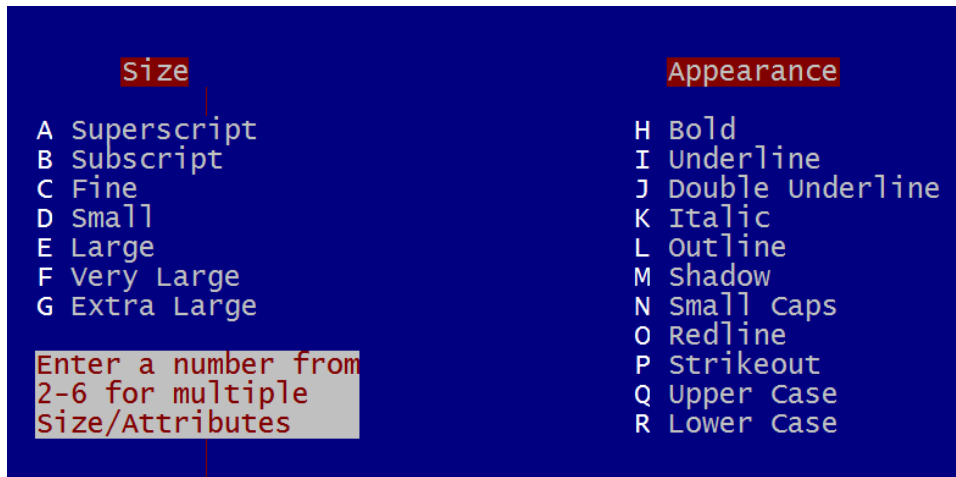
Mode 1: At its most basic you just play the macro. This will bring up the following screen:



Choosing a number from 1 to 7 will allow you to perform the desired attribute change on that amount of text. Some notes are, however, in order. As the macro goes directly into the second screen shown below, do not panic if you chose option 1 or 4. Once the option is chosen, the macro will send you back to the editing screen where, for option 1, it asks you to enter the number of words on which you want to take action. Pressing any other key will also allow you to change the position of the cursor, or for option 4, will ask you to define your block.

A sentence is defined mechanically, not logically, by WP. That is, it finds the first end of line punctuation such that if you have an abbreviation with a period in the sentence, it will consider that period as an end of sentence marker. So if you want to add an attribute to a whole sentence, be aware of this. Also, in the case of a word/words, sentence or paragraph, the macro looks for the end of any of these definitions and then moves one space back so as not to include the final punctuation. However, if at the end of a sentence you have various kinds of brackets or a footnote, it will include everything up to that bracket or footnote such that you may have to physically change the position of your final punctuation after the macro as run.

After you press 1 to 7, the following screen displays:



If you press a letter, it will place the selected attribute on the selected piece of text. If you choose a number from 2 to 6, it will allow you to add that number of attributes to the chosen piece of text. It will also keep count of the attributes as you choose them and let you know which attributes you have already chosen.

Mode 2: If you have already blocked off a section of text before playing it, the macro will bypass the first screen described above and take you directly to the second screen where you can again either choose just one attribute or choose a number to insert more than one attribute.

I hope you find this macro useful.